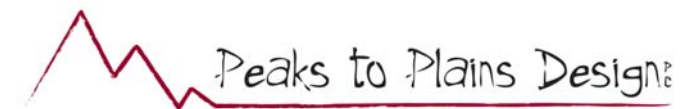
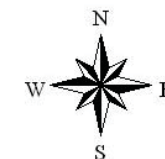


Riverfront Park Master Plan Update

Existing Conditions

May 1, 2008 Preliminary Draft



Existing Entrances

- Existing entrances along South Billings Boulevard need improved to minimize traffic problems along South Billings Boulevard.
- Possible improvements are aligning the entry drives into the park or adding an additional turn lanes on South Billings Boulevard.

Conservation Education Center

- Partnership between YRPA, Audobon Society and City of Billings
- Wet lab and amphitheater
- Educational ponds
- Educational ecosystems

Norm's Island Trailhead

- Expand parking lot
- Berm to screen trail from parking lot
- Memorial benches and trees along trail corridor

New Entry Point

- Serves new neighborhood growth

Parking Lot

- Increased parking to accommodate users

Formal Park Area

- Maintain existing uses:
- Picnic area including bbq's
- Picnic shelters
- Formal lake edge walk
- Active use pond
- Children's play area
- Concession

Improved Trail

- 8' asphalt trail

Picnic Area

- Picnic tables with bbq's
- Open picnic shelter

New Entry Point

- Vehicular entry

Road Access

- Improved road

Motorized Boat Launch

- Boat ramp
- Parking lot
- Trailhead with kiosk

Main Trail

- 10' multi-use trail
- Designate as Dutcher Trail

Picnic Area

- Picnic tables

Dog Park

- Two potential areas
- City Standard Design

Expanded Parking Lot

- Increased parking to accommodate increased users

Picnic Area

- Picnic tables

Improved Trail

- 8' gravel trail

Nature Conservation Area

- Maintain park land to represent native ecosystem
- Redirect dogs to new dog park
- Provide park improvements that compliment the Conservation Education Center

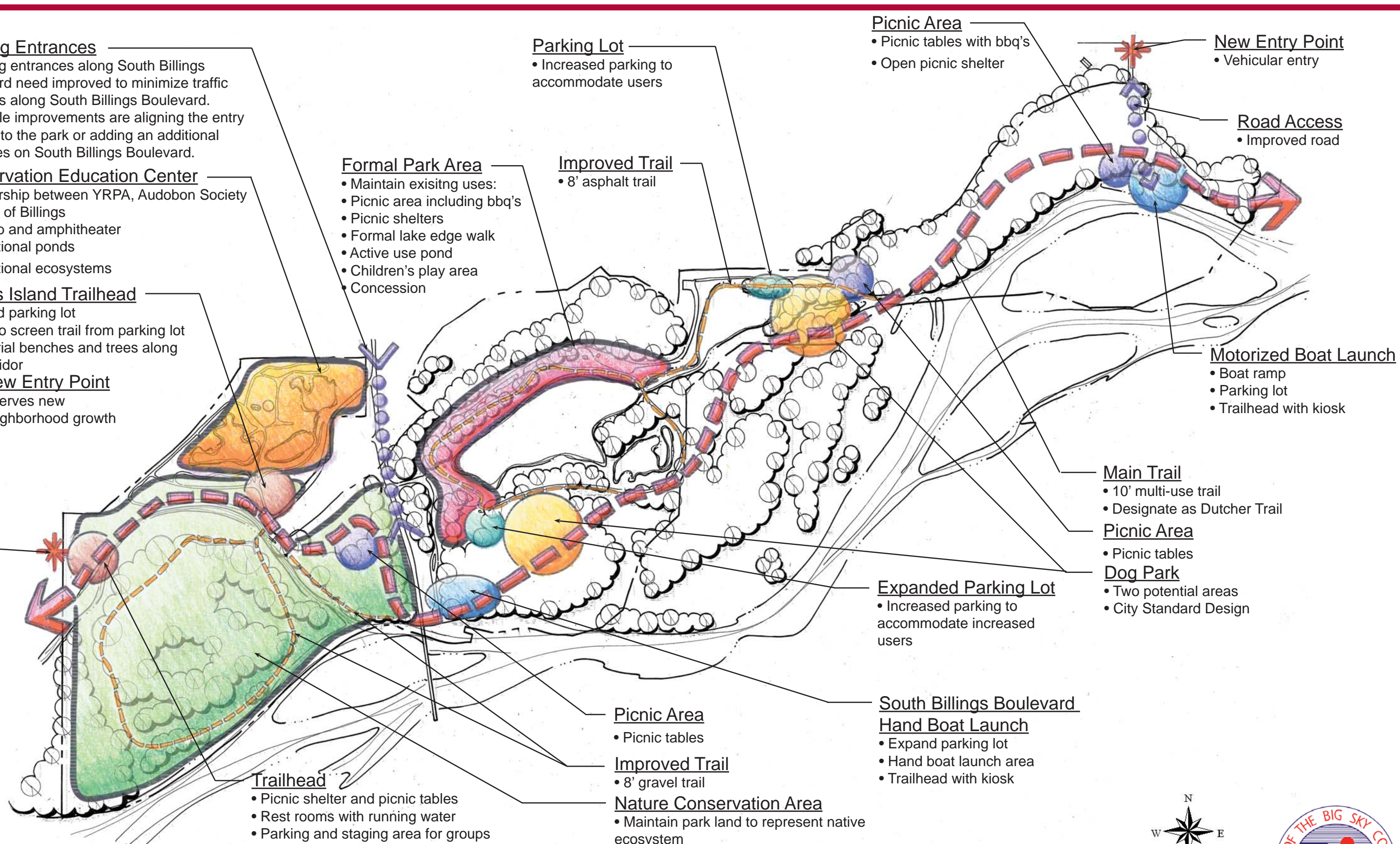
South Billings Boulevard

Hand Boat Launch

- Expand parking lot
- Hand boat launch area
- Trailhead with kiosk

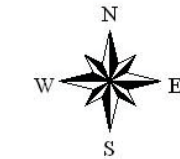
Trailhead

- Picnic shelter and picnic tables
- Rest rooms with running water
- Parking and staging area for groups



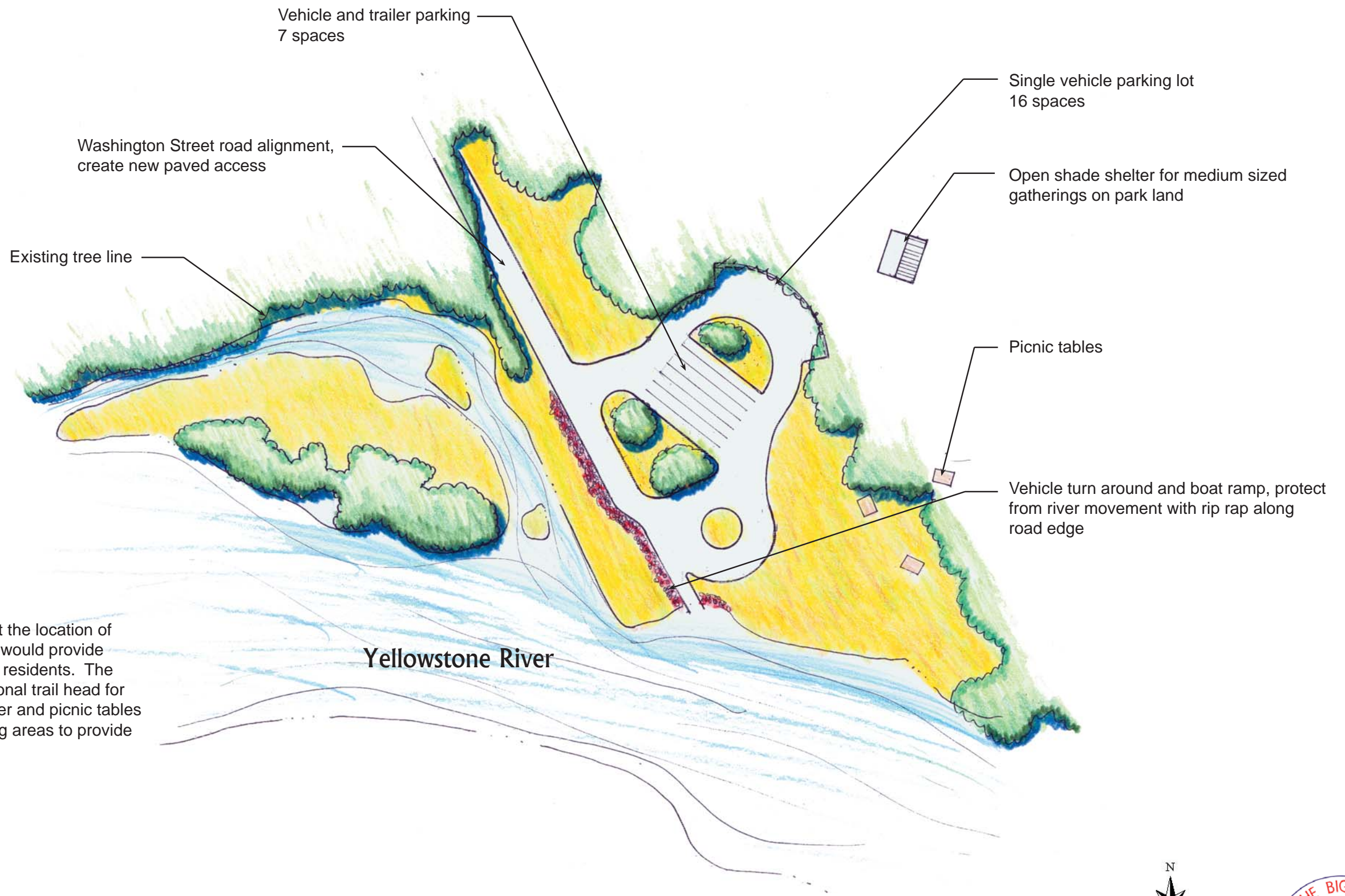
Riverfront Park Master Plan Update Area Concept Map

May 1, 2008 Preliminary Draft



Peaks to Plains Design



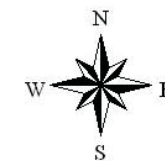


Motorized Boat Launch

A motorized boat launch placed at the location of the old Washington Street Bridge would provide additional river access for Billings residents. The parking lot can serve as an additional trail head for the main park trail. A shade shelter and picnic tables can be placed into the surrounding areas to provide an informal picnic area.

**Riverfront Park Master Plan Update
Motorized Boat Launch Conceptual Plan**

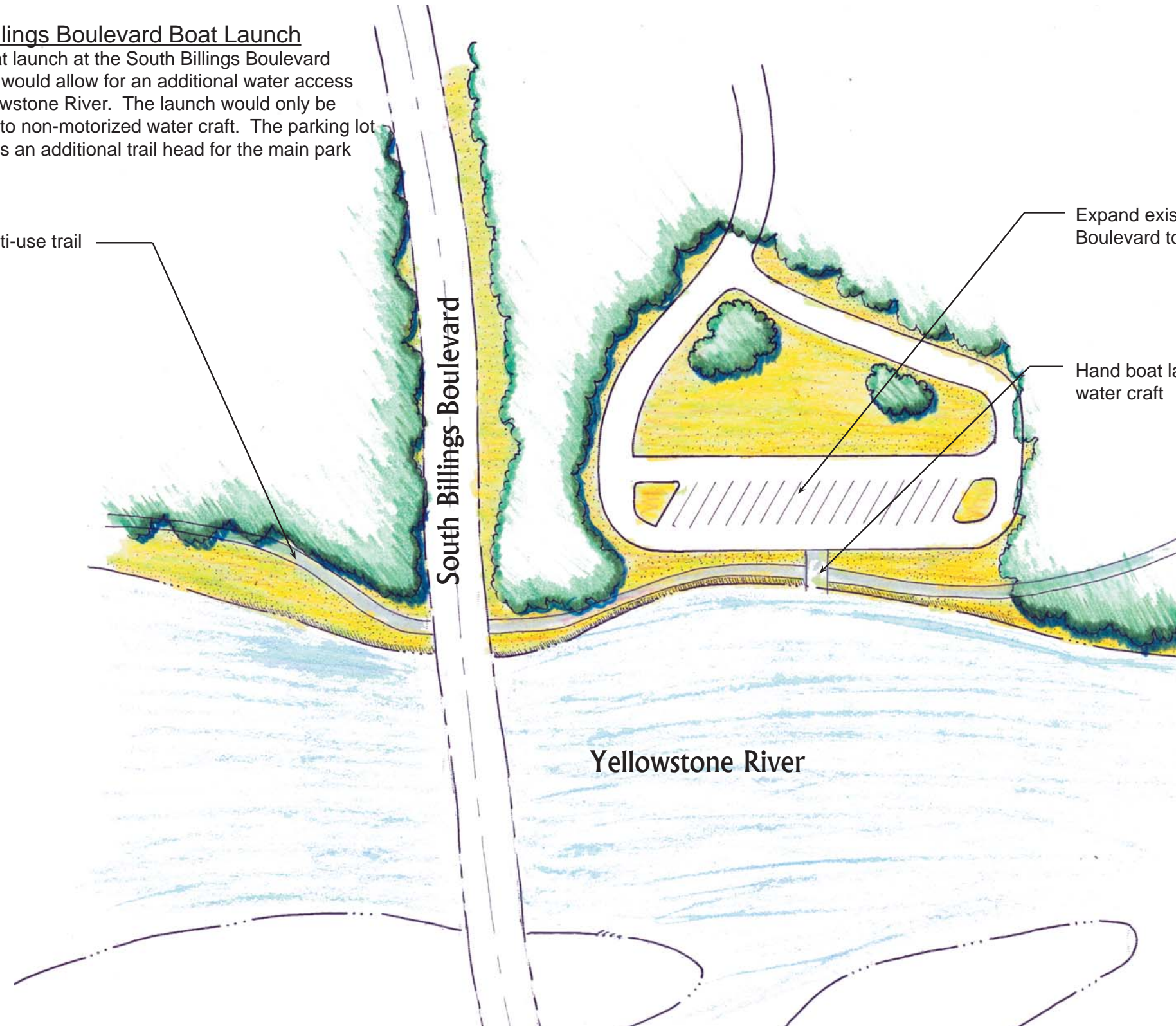
May 1, 2008 Preliminary Draft



South Billings Boulevard Boat Launch

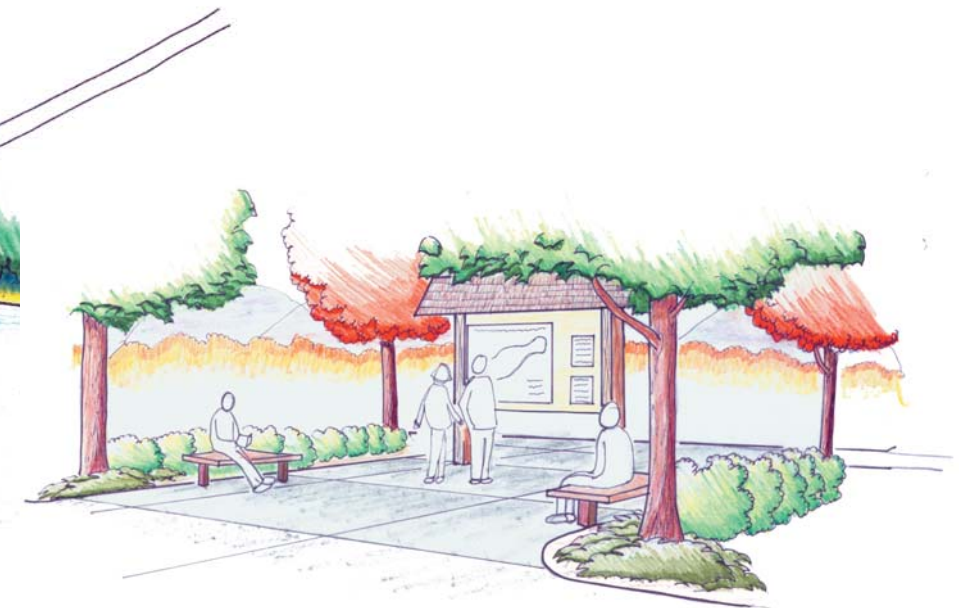
A hand boat launch at the South Billings Boulevard Parking lot would allow for an additional water access to the Yellowstone River. The launch would only be accessible to non-motorized water craft. The parking lot will serve as an additional trail head for the main park trail.

10' wide multi-use trail



Expand existing parking lot along South Billings Boulevard to accommodate boat launch and trailhead.

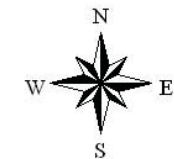
Hand boat launch for non-motorized water craft



Trailhead Perspective

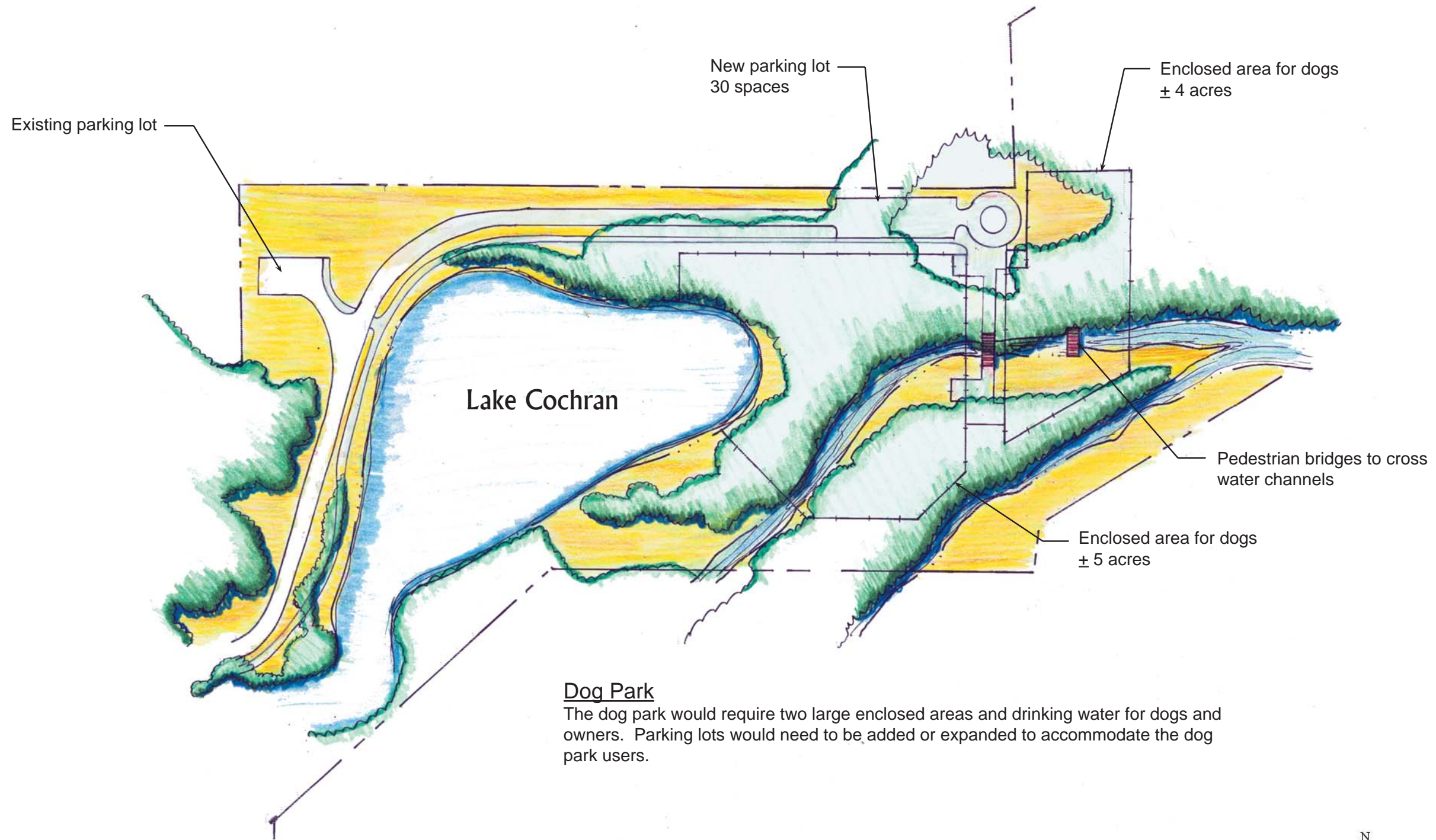
Riverfront Park Master Plan Update Hand Boat Launch Conceptual Plan

May 1, 2008 Preliminary Draft



Peaks to Plains Design





Riverfront Park Master Plan Update

Dog Park Conceptual Plan

May 1, 2008 Preliminary Draft



Peaks to Plains Design

